

LASER SOLUTIONS YOUR ROAD TO SUCCESS

TEKNIK & LEVERANS



STEFAN
Tekniker



BERTIL
Tekniker



DAVID
Konstruktör (Mek)



CRISTIAN
Konstruktör (Mek)



JESPER
Konstruktör (EI)



ANETTE
Inköpare



REIK
Technical Lead



ANTON
Projektingenjör



DANIEL
Projektingenjör



ROBERT
Projektingenjör (Lab)

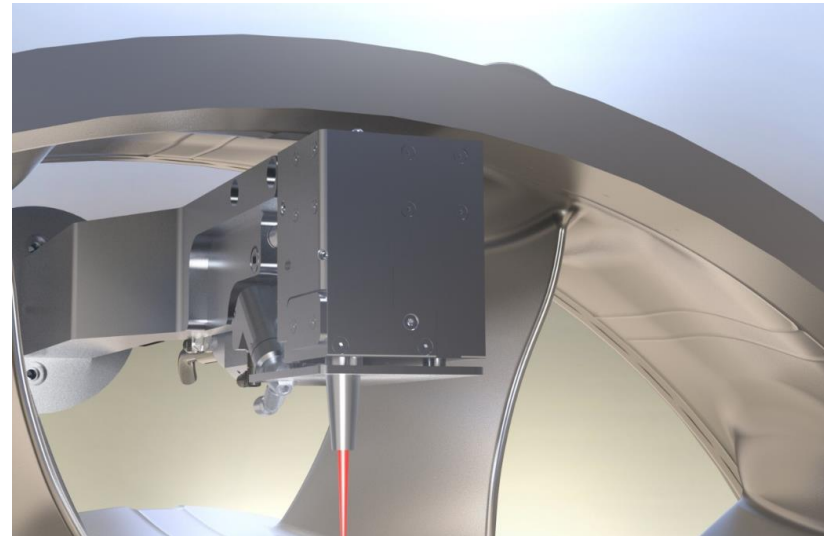
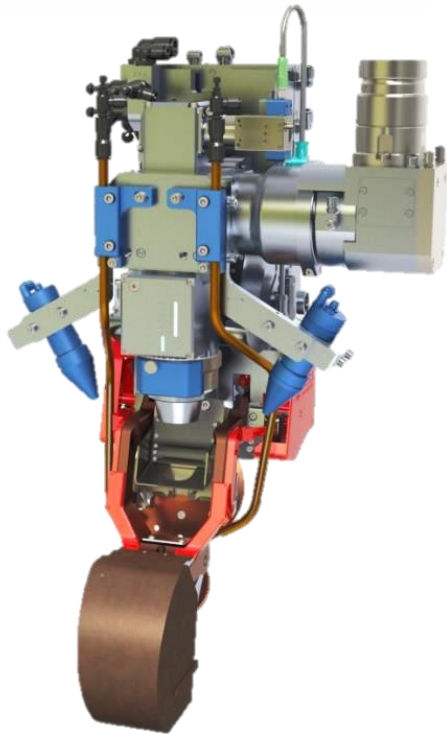


THORD
Projektingenjör



VEDRAN
Projektingenjör

Utveckling i nära samarbete med kunden



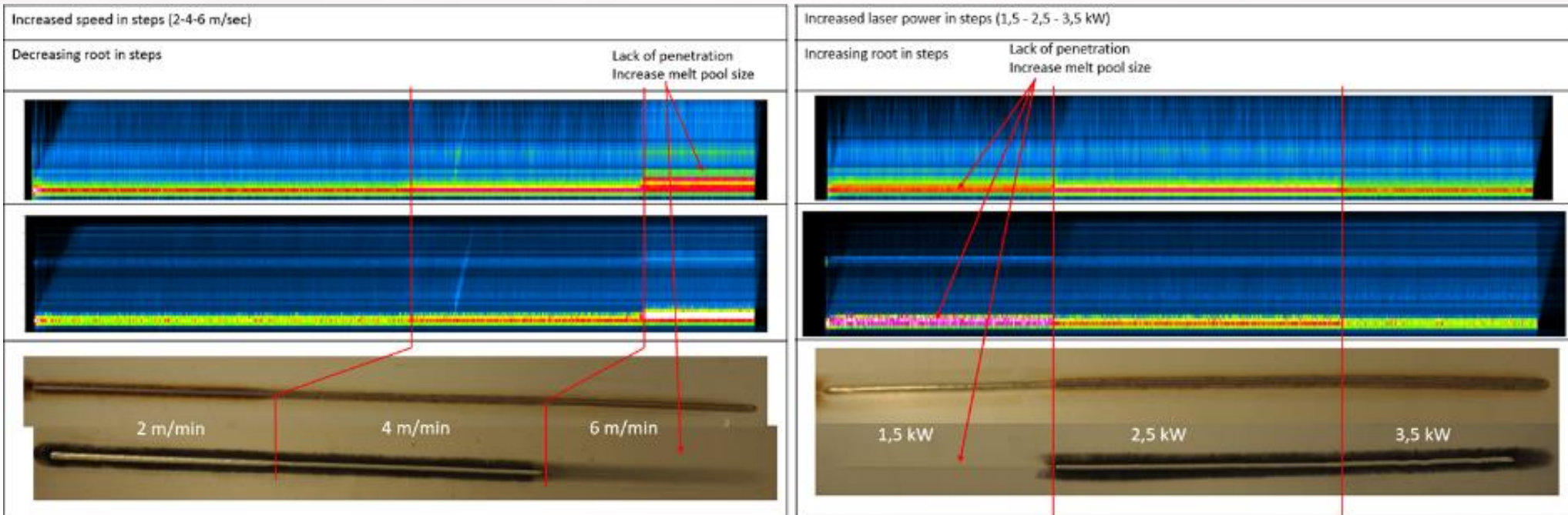
TEKNOLOGIUTVECKLING



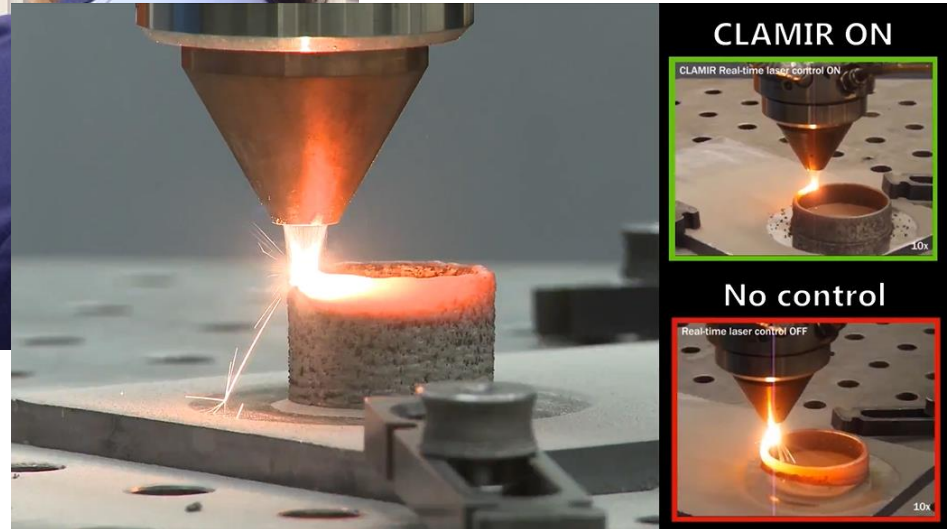
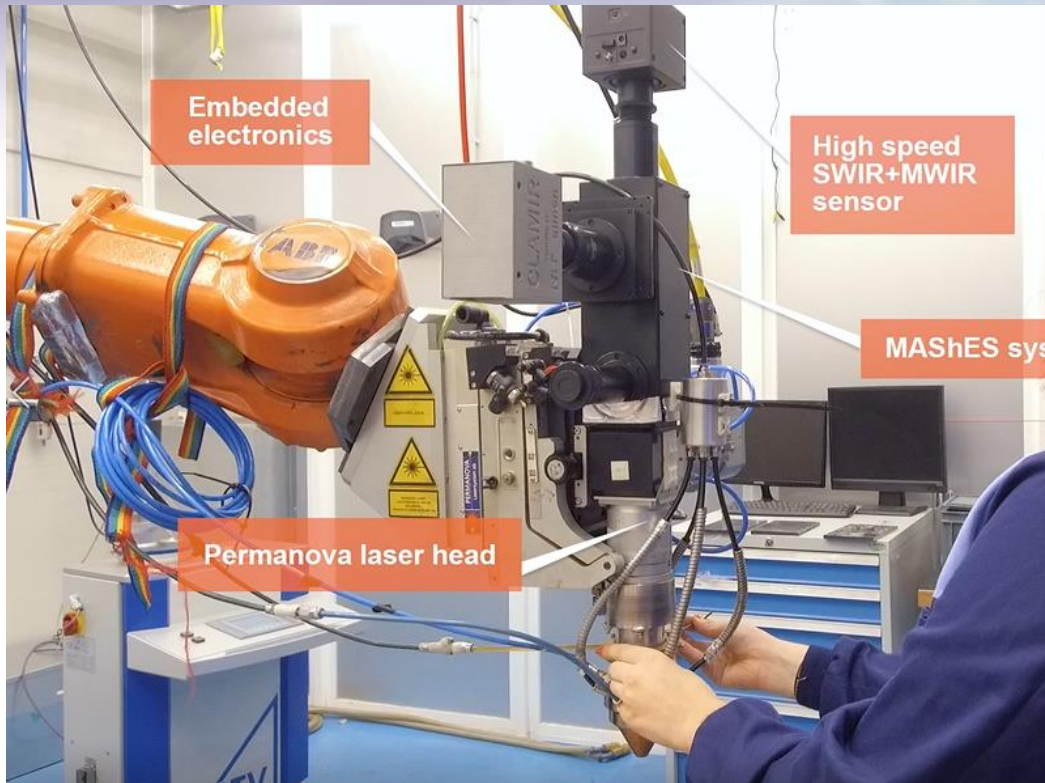
Fullständigt MAShES-system med två **NIT** kameror på ett Permanova WT04 med optiska komponenter från **SILL** för spektralanalys av lasersvetsprocess



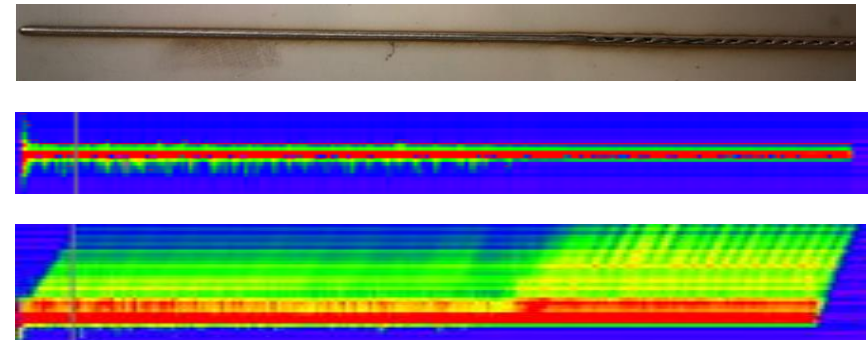
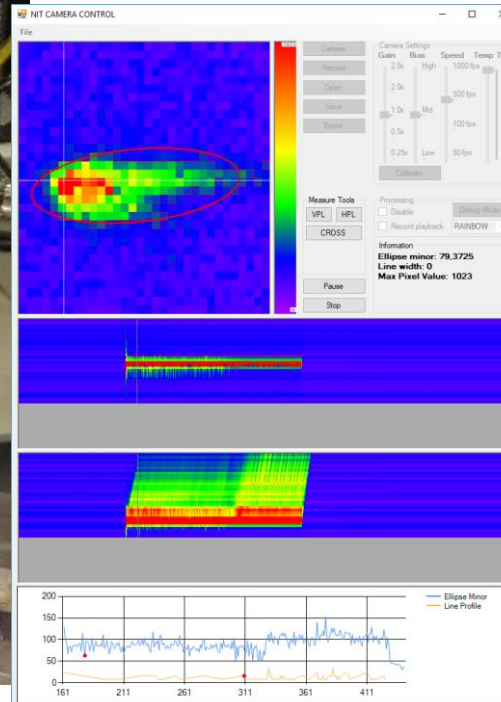
Grundläggande forskning

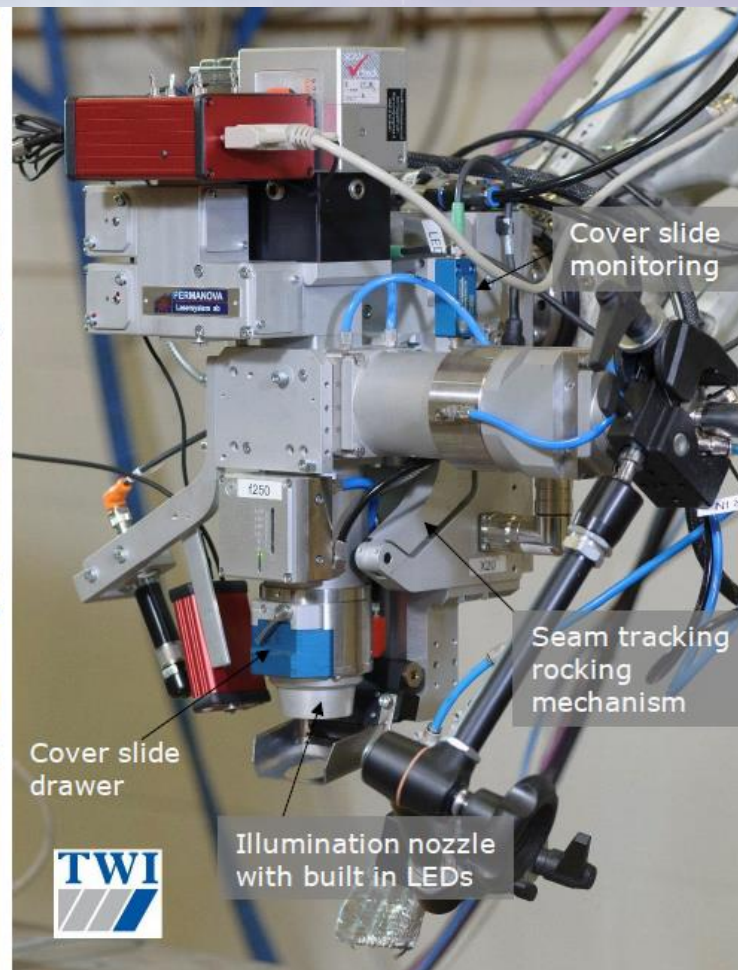
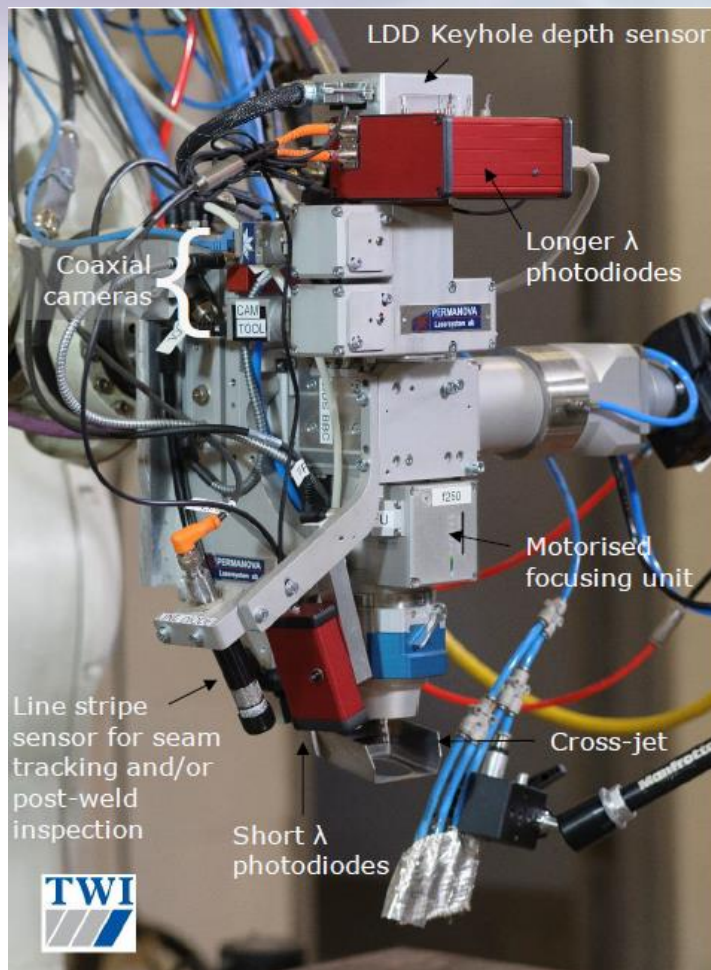


MASHES LMD



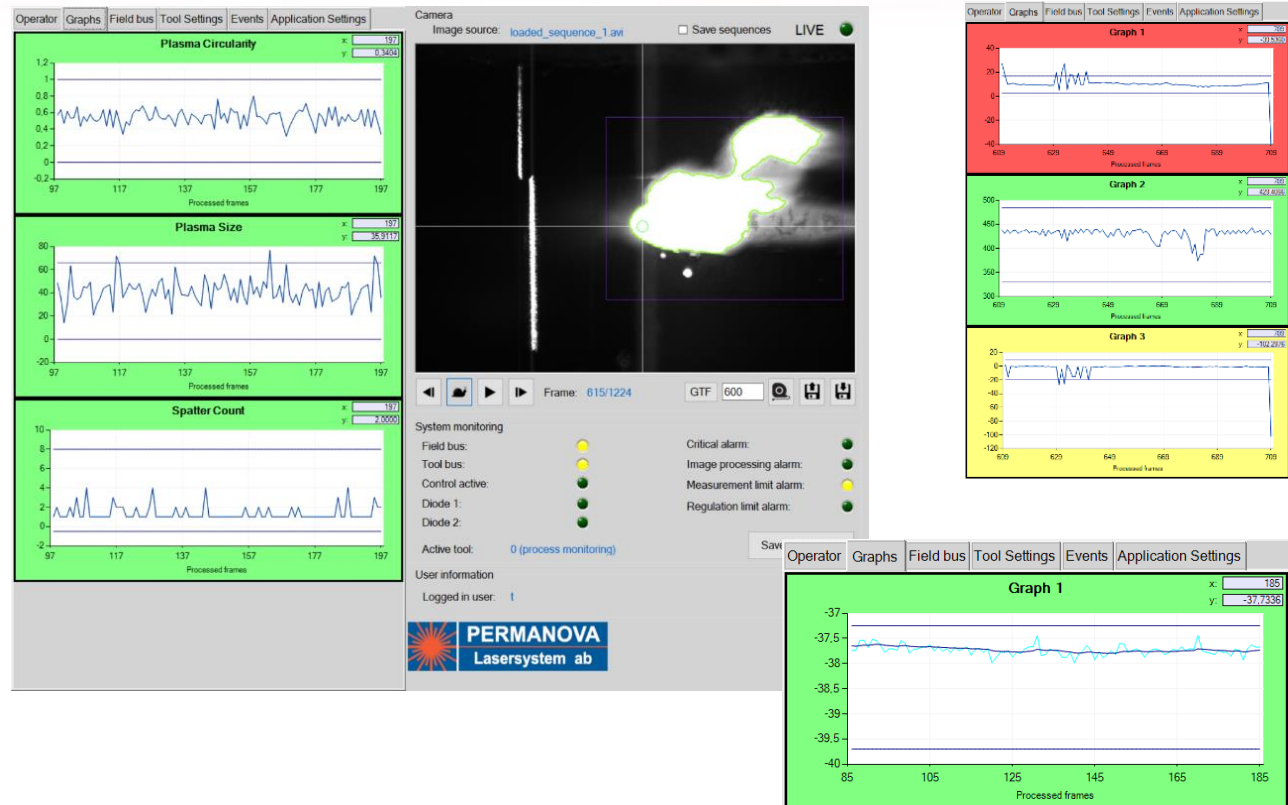
”Ett kondensat av projektresultatet för industriell integration”



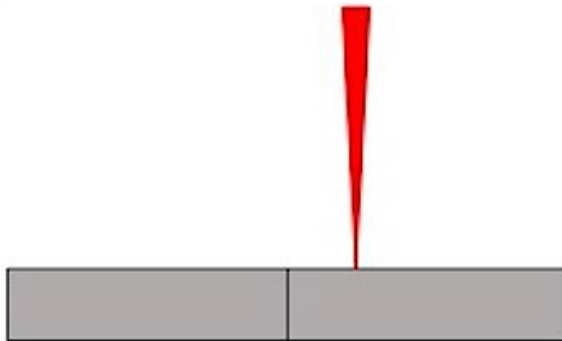


Integration i WT04

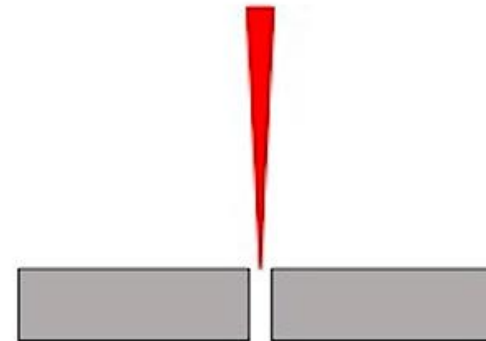
- Process monitoring functionality integrated in the Permanova PermaTrack software
- Several process characteristics are monitored and visualized in real-time during the welding process
- Warning and alarms can be automatically generated during welding
- Advanced smoothing algorithms easily applied for more robust monitoring

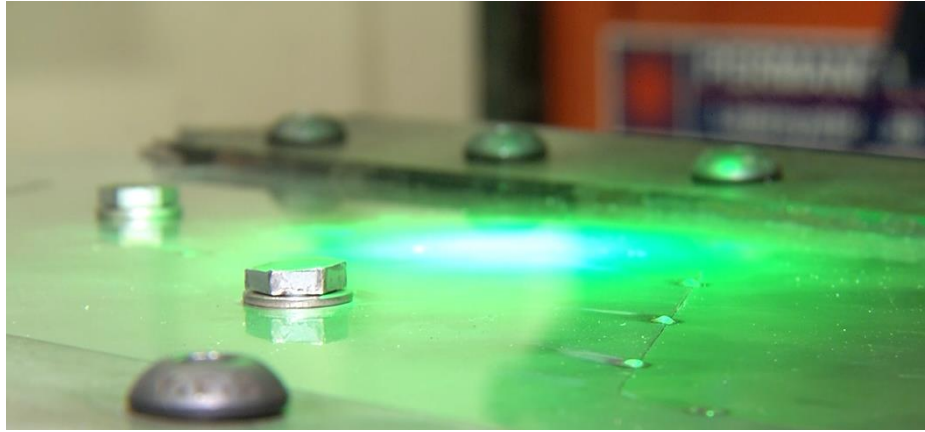
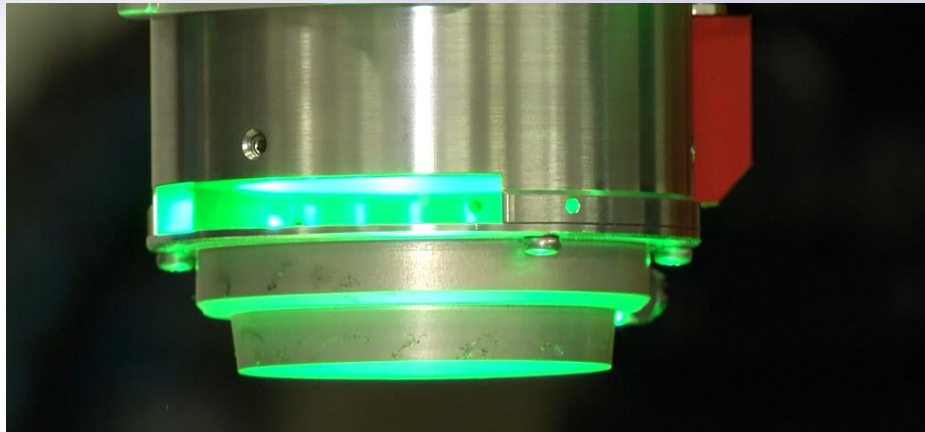
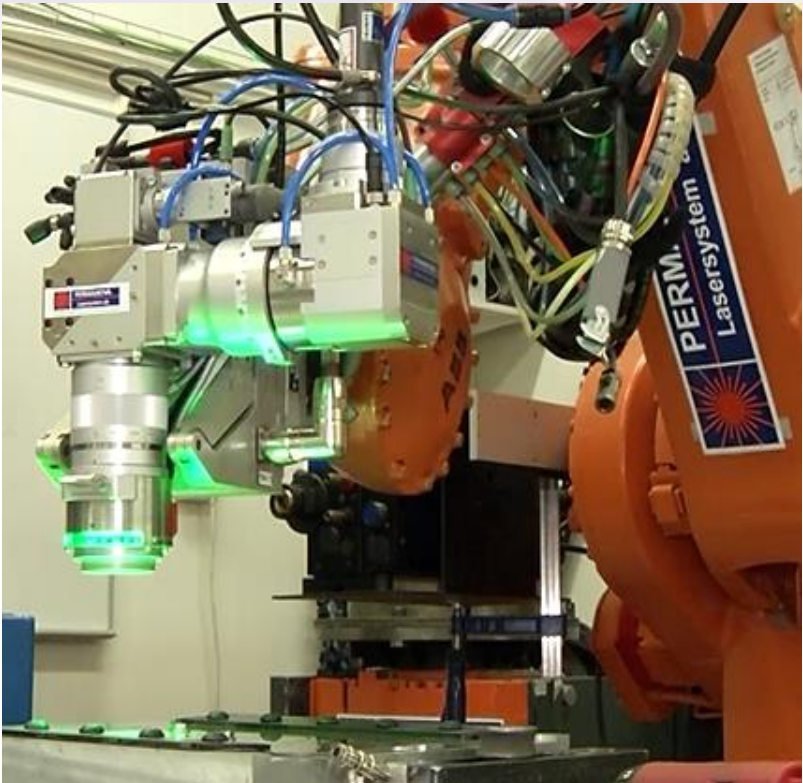


Weld joint laser beam offset

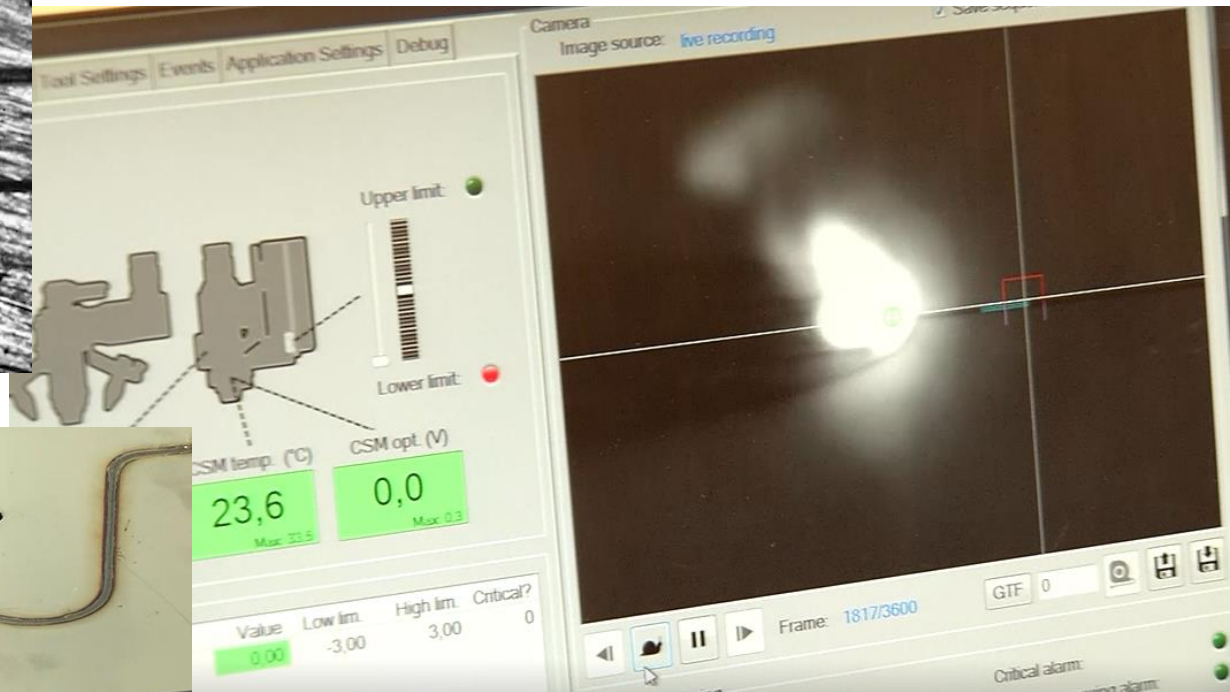
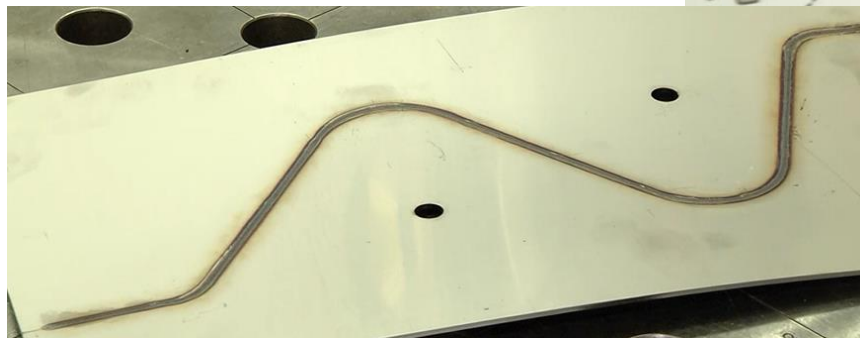


Varying joint gap width

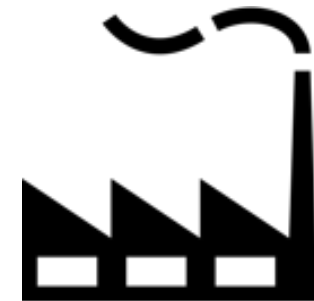




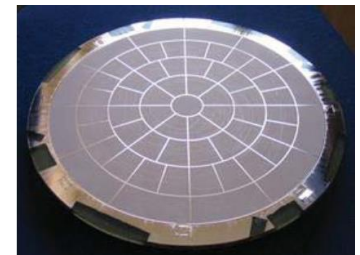
Fogföljning av stumfog med WT04



Teknologiöverföring från forskning till industri

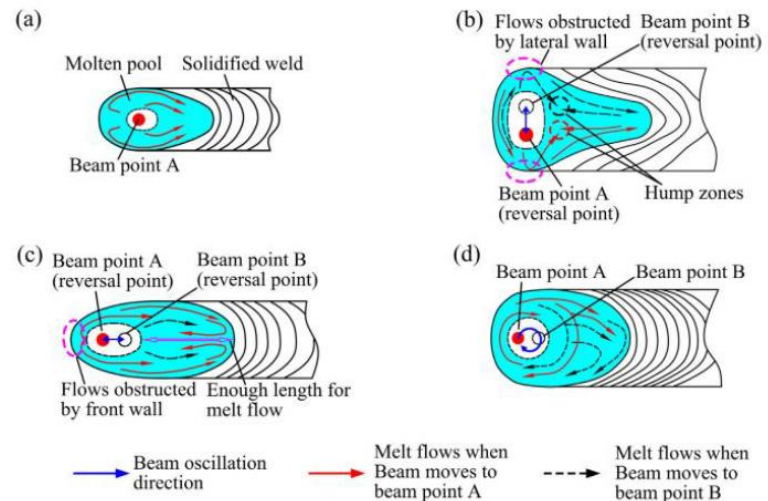
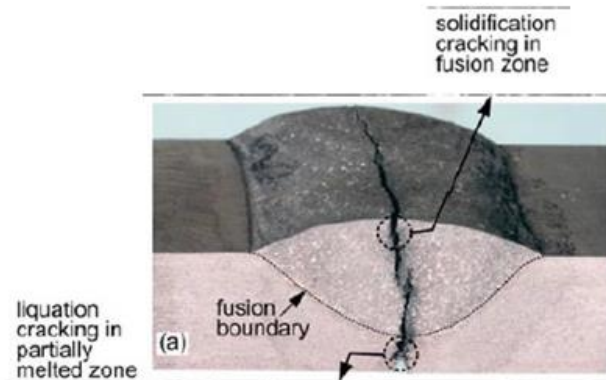


- SAMw – **S**ynergy for **A**dditive **M**anufacturing using laser beam heat source and **w**ire
 - Termisk historik och geometri
 - Materialteknologi
 - Processövervakning
- AdOpt – Flexibel styrning av laserprocesser för höga effekter med hjälp av deformerbara speglar



PÅGÅENDE PROJEKT

- LAWA – Production friendly solutions for **LA**ser **W**elding of **Al**uminum
 - Svetsning med oscillerande optik för att undvika porer och sprickbildning



Thanks for your attention!

